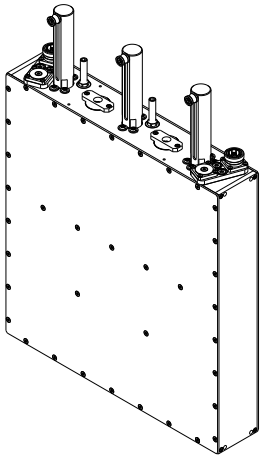


FM 3-Pole 70 mm Bandpass Filter

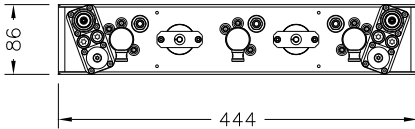
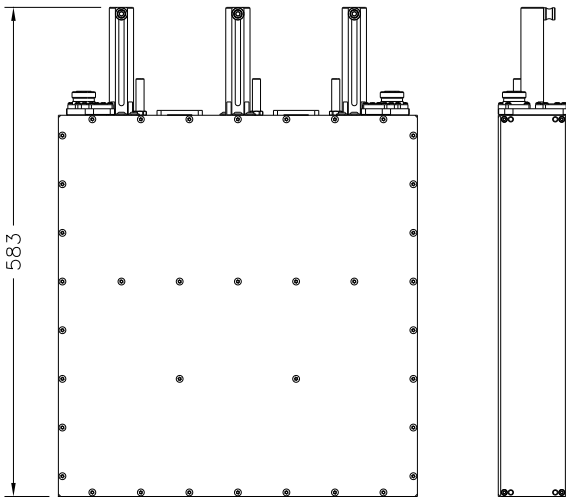


FEATURES

- EVA-Mode
- Full-Band Tunability
- DC-Short
- Modular Connector System
- Rack Ready Design
- 10-Year Warranty

OPTIONS

- Rack-Shelf ⁽⁷⁾



SPECIFICATIONS

Code / Revision	A-CL3P70F / A
No. of Poles / Cavity Size	3-Pole / 70 mm
Frequency Range / Bandwidth	87.5-108 MHz / 1.2-2.0 MHz
Temperature Stability	< 1.0 kHz/K
Max Operating Temperature (Body)	65 °C (149 °F)
Environmental Conditions	-5 to +55 °C (+23 to +131 °F), IP60
Dimensions / Weight ⁽¹⁾	444x86x583 mm / 12.2 kg
Connectors ⁽²⁾	2x 32 mm Input; Output
	D-PC32C N Female
	D-PC32E 7-16 Female (Default)
	D-PC32G 7/8" FastLine Socket
	D-PC32H 7/8" FastLine Flange
	D-PC32J 1+5/8" FastLine Socket
	D-PC32K 1+5/8" FastLine Flange
Options ⁽²⁾	O-KP2.02 2U Panel, with Handles

TUNING DATA ⁽²⁾

	2.0			1.4			1.0		
Bandwidth	2.0 MHz			1.4 MHz			1.0 MHz		
Tuning Code	T-3F.01			T-3F.04			T-3F.05		
Max RMS Input Power ⁽³⁾	Default	(108 MHz)		Default	(108 MHz)		Default	(108 MHz)	
		500 W			370 W			270 W	
Efficiency (Typ.)	86%			81%			74%		
Insertion Loss		(87.5 MHz)	(108 MHz)		(87.5 MHz)	(108 MHz)		(87.5 MHz)	(108 MHz)
	C.F.	< 0.63 dB	< 0.66 dB	C.F.	< 0.88 dB	< 0.92 dB	C.F.	< 1.26 dB	< 1.33 dB
	±150 kHz	< 0.67 dB	< 0.70 dB	±150 kHz	< 0.95 dB	< 0.99 dB	±150 kHz	< 1.37 dB	< 1.44 dB
Selectivity	C.F. ± 2.0 MHz > 27 dB			C.F. ± 1.4 MHz > 27 dB			C.F. ± 1.0 MHz > 27 dB		
Harmonic Attenuation	> 40 dB up to 324 MHz			> 40 dB up to 324 MHz			> 40 dB up to 324 MHz		
Return Loss (VSWR)	> 26 dB (1.11)			> 26 dB (1.11)			> 26 dB (1.11)		
Group Delay Variation	< 10 ns			< 20 ns			< 40 ns		

⁽¹⁾ Approximate, default configuration ⁽²⁾ Other Connectors, Options, Tunings available ⁽³⁾ Altitude < 1500 m (4,900 ft.), Free air, Ambient temp. < 30 °C (86 °F)