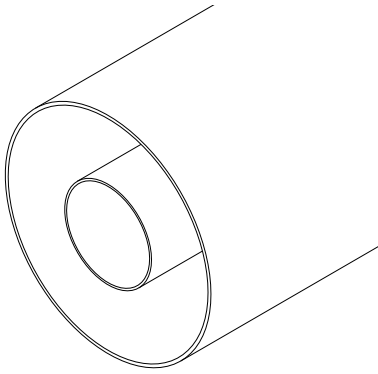


4+1/2" R. L. Connections

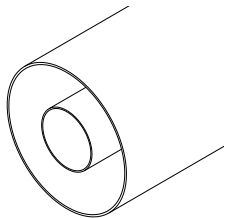
RL-103



FEATURES

- FastLine System
- Flush, Recessed and NAX/WX Cutbacks
- Direct Socket-Plug Connections
- EIA and JEITA Standard Compliant

Rigid Lines

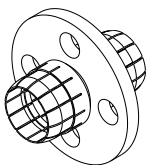


SPECIFICATIONS

Max RMS Power	Default	Painted	
	80.0 kW	100.0 kW	@ 100 MHz
	55.0 kW	70.0 kW	@ 200 MHz
	40.0 kW	50.0 kW	@ 400 MHz
	27.5 kW	35.0 kW	@ 800 MHz
Outer Conductor	High Conductivity Aluminum Alloy		
Inner Conductor	High Conductivity Copper (ETP)		
Environmental Conditions	-5 to +55°C (+23 to +131°F), IP60		
Distance Between Inner Supports	3 m (9.8 ft)		
Available lengths	2 or 4 m (6.6 or 13.1 ft)		
Codes	D-RL103O	4+1/2" Rigid Line Outer	
	D-RL103I	4+1/2" Rigid Line Inner	

⁽¹⁾ @ 800 MHz

Inner Supports



SPECIFICATIONS

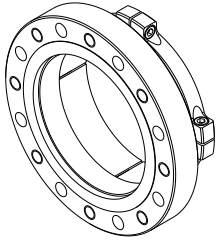
Max RMS Power	100.0 kW	@ 100 MHz
	70.0 kW	@ 200 MHz
	50.0 kW	@ 400 MHz
	35.0 kW	@ 800 MHz
Return Loss ⁽¹⁾	> 40 dB (VSWR < 1.02)	
Environmental Conditions	-5 to +55°C (+23 to +131°F), IP60	
Distance Between Inner Supports	3 m (9.8 ft)	
Codes	D-IS103P	4+1/2" Inner Support

⁽¹⁾ @ 800 MHz

4+1/2" R. L. Connections

RL-103

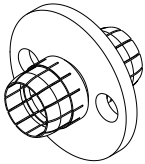
EIA Flanges



SPECIFICATIONS

Max RMS Power	100.0 kW	@ 100 MHz
	70.0 kW	@ 200 MHz
	50.0 kW	@ 400 MHz
	35.0 kW	@ 800 MHz
Environmental Conditions	-5 to +55°C (+23 to +131°F), IP60	
Codes ⁽²⁾	D-CF103Q	4+1/2" EIA FastLine Flange
Options	O-NNB.04	4+1/2" Flange nuts and bolts set
⁽¹⁾ @ 800 MHz ⁽²⁾ Inner Connections not included		

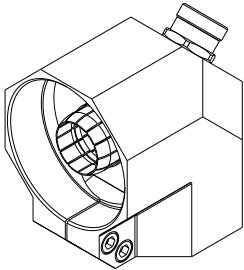
EIA Inner Connections



SPECIFICATIONS

Max RMS Power	100.0 kW	@ 100 MHz
	70.0 kW	@ 200 MHz
	50.0 kW	@ 400 MHz
	35.0 kW	@ 800 MHz
Return Loss ⁽¹⁾	> 40 dB (VSWR < 1.02)	
Environmental Conditions	-5 to +55°C (+23 to +131°F), IP60	
Codes	D-IC103Q	4+1/2" EIA Inner Connection
⁽¹⁾ @ 800 MHz		

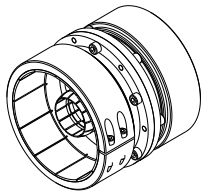
Elbows



SPECIFICATIONS

Max RMS Power	100.0 kW	@ 100 MHz
	70.0 kW	@ 200 MHz
	50.0 kW	@ 400 MHz
	35.0 kW	@ 800 MHz
Return Loss ⁽¹⁾	> 40 dB (VSWR < 1.02)	
Environmental Conditions	-5 to +55°C (+23 to +131°F), IP60	
Codes	D-EC103R	4+1/2" FastLine Elbow
	D-EC103R1	4+1/2" Elbow (17.3 mm c/back)
Options	O-NFM.03	Fine-match screw (Removed)
⁽¹⁾ @ 800 MHz		

Junctions



SPECIFICATIONS

Max RMS Power	100.0 kW	@ 100 MHz
	70.0 kW	@ 200 MHz
	50.0 kW	@ 400 MHz
	35.0 kW	@ 800 MHz
Return Loss ⁽¹⁾	> 40 dB (VSWR < 1.02)	
Environmental Conditions	-5 to +55°C (+23 to +131°F), IP60	
Codes	D-JC103R	4+1/2" FastLine Junction
⁽¹⁾ @ 800 MHz		