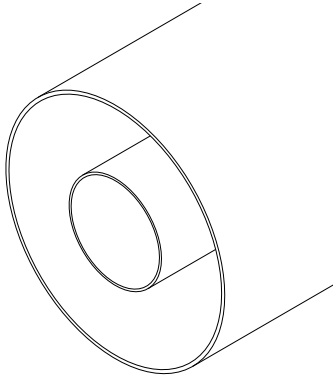


6+1/8" (WX-152D) R. L. Connections

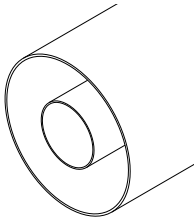
RL-152



FEATURES

- FastLine System
- Flush, Recessed and NAX/WX Cutbacks
- Direct Socket-Plug Connections
- EIA and JEITA Standard Compliant

Rigid Lines

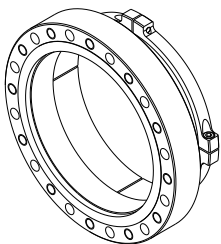


SPECIFICATIONS

Max RMS Power	Default	Painted	
	160.0 kW	200.0 kW	@ 100 MHz
	110.0 kW	140.0 kW	@ 200 MHz
	80.0 kW	100.0 kW	@ 400 MHz
	55.0 kW	70.0 kW	@ 800 MHz
Outer Conductor	High Conductivity Aluminum Alloy		
Inner Conductor	High Conductivity Copper (ETP)		
Environmental Conditions	-5 to +55°C (+23 to +131°F), IP60		
Available lengths	2 or 4 m (6.6 or 13.1 ft)		
Codes	D-RL152O	6+1/8" Rigid Line Outer	
	D-RL152I	6+1/8" Rigid Line Inner	

⁽¹⁾ @ 800 MHz

EIA Flanges



SPECIFICATIONS

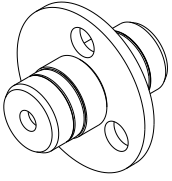
Max RMS Power	200.0 kW	@ 100 MHz
	140.0 kW	@ 200 MHz
	100.0 kW	@ 400 MHz
	70.0 kW	@ 800 MHz
Environmental Conditions	-5 to +55°C (+23 to +131°F), IP60	
Codes ⁽²⁾	D-CF152V	6+1/8" EIA FastLine Flange
Options	O-NNB.05	6+1/8" Flange nuts and bolts set

⁽¹⁾ @ 800 MHz ⁽²⁾ Inner Connections not included

6+1/8" (WX-152D) R. L. Connections

RL-152

EIA Inner Connections



SPECIFICATIONS

Max RMS Power	200.0 kW	@ 100 MHz
	140.0 kW	@ 200 MHz
	100.0 kW	@ 400 MHz
	70.0 kW	@ 800 MHz
Return Loss ⁽¹⁾	> 40 dB (VSWR < 1.02)	
Environmental Conditions	-5 to +55°C (+23 to +131°F), IP60	
Codes	D-IC152V	6+1/8" EIA Inner Connection
⁽¹⁾ @ 800 MHz		