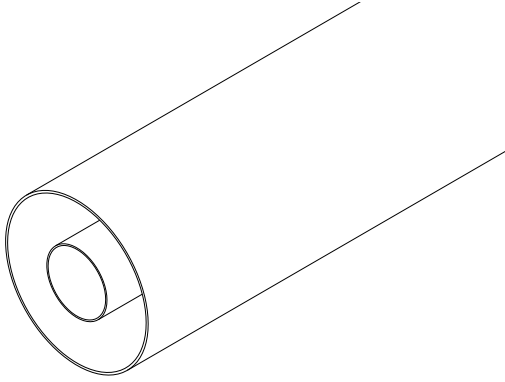


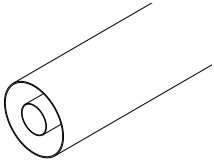
7/8" (WX-20D) R. L. Connections



FEATURES

- FastLine System
- Flush, Recessed and NAX/WX Cutbacks
- Direct Socket-Plug Connections
- EIA and JEITA Standard Compliant

Rigid Lines

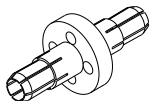


SPECIFICATIONS

| | | | |
|---------------------------------|-----------------------------------|--------------------------------|-----------|
| Max RMS Power | Default | Painted | |
| | 5.5 kW | 7.0 kW | @ 100 MHz |
| | 4.0 kW | 5.0 kW | @ 200 MHz |
| | 2.75 kW | 3.5 kW | @ 400 MHz |
| | 2.0 kW | 2.5 kW | @ 800 MHz |
| Outer Conductor | High Conductivity Aluminum Alloy | | |
| Inner Conductor | High Conductivity Copper (ETP) | | |
| Environmental Conditions | -5 to +55°C (+23 to +131°F), IP60 | | |
| Distance Between Inner Supports | 0.8 m (2.6 ft) | | |
| Available lengths | 2 or 4 m (6.6 or 13.1 ft) | | |
| Codes | D-RL23O | 7/8" (WX-20D) Rigid Line Outer | |
| | D-RL23I | 7/8" (WX-20D) Rigid Line Inner | |

⁽¹⁾ @ 800 MHz

Inner Supports



SPECIFICATIONS

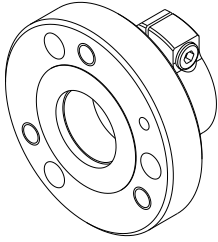
| | | |
|---------------------------------|-----------------------------------|-----------------------------|
| Max RMS Power | 7.0 kW | @ 100 MHz |
| | 5.0 kW | @ 200 MHz |
| | 3.5 kW | @ 400 MHz |
| | 2.5 kW | @ 800 MHz |
| | Return Loss ⁽¹⁾ | > 40 dB (VSWR < 1.02) |
| Environmental Conditions | -5 to +55°C (+23 to +131°F), IP60 | |
| Distance Between Inner Supports | 0.8 m (2.6 ft) | |
| Codes | D-IS23G | 7/8" (WX-20D) Inner Support |

⁽¹⁾ @ 800 MHz

7/8" (WX-20D) R. L. Connections

RL-23

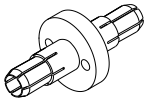
EIA Flanges



SPECIFICATIONS

| | | |
|--|-----------------------------------|---------------------------------|
| Max RMS Power | 7.0 kW | @ 100 MHz |
| | 5.0 kW | @ 200 MHz |
| | 3.5 kW | @ 400 MHz |
| | 2.5 kW | @ 800 MHz |
| Environmental Conditions | -5 to +55°C (+23 to +131°F), IP60 | |
| Codes ⁽²⁾ | D-CF23H | 7/8" EIA FastLine Flange |
| | D-CF23H1 | 7/8" EIA Flange (8.7 mm c/back) |
| Options | O-NNB.01 | 7/8" Flange nuts and bolts set |
| ⁽¹⁾ @ 800 MHz ⁽²⁾ Inner Connections not included | | |

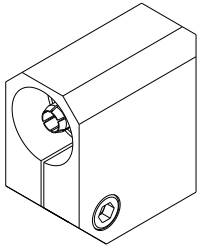
EIA Inner Connections



SPECIFICATIONS

| | | |
|----------------------------|-----------------------------------|---------------------------|
| Max RMS Power | 7.0 kW | @ 100 MHz |
| | 5.0 kW | @ 200 MHz |
| | 3.5 kW | @ 400 MHz |
| | 2.5 kW | @ 800 MHz |
| Return Loss ⁽¹⁾ | > 40 dB (VSWR < 1.02) | |
| Environmental Conditions | -5 to +55°C (+23 to +131°F), IP60 | |
| Codes | D-IC23H | 7/8" EIA Inner Connection |
| ⁽¹⁾ @ 800 MHz | | |

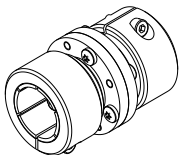
Elbows



SPECIFICATIONS

| | | |
|----------------------------|-----------------------------------|----------------------------|
| Max RMS Power | 7.0 kW | @ 100 MHz |
| | 5.0 kW | @ 200 MHz |
| | 3.5 kW | @ 400 MHz |
| | 2.5 kW | @ 800 MHz |
| Return Loss ⁽¹⁾ | > 40 dB (VSWR < 1.02) | |
| Environmental Conditions | -5 to +55°C (+23 to +131°F), IP60 | |
| Codes | D-EC23I | 7/8" FastLine Elbow |
| | D-EC23I1 | 7/8" Elbow (8.7 mm c/back) |
| | D-EC23I2 | WX-20D Elbow (1 mm c/back) |
| ⁽¹⁾ @ 800 MHz | | |

Junctions



SPECIFICATIONS

| | | |
|----------------------------|-----------------------------------|-------------------------------|
| Max RMS Power | 7.0 kW | @ 100 MHz |
| | 5.0 kW | @ 200 MHz |
| | 3.5 kW | @ 400 MHz |
| | 2.5 kW | @ 800 MHz |
| Return Loss ⁽¹⁾ | > 40 dB (VSWR < 1.02) | |
| Environmental Conditions | -5 to +55°C (+23 to +131°F), IP60 | |
| Codes | D-JC23I | 7/8" FastLine Junction |
| | D-JC23I2 | WX-20D Junction (1 mm c/back) |
| ⁽¹⁾ @ 800 MHz | | |