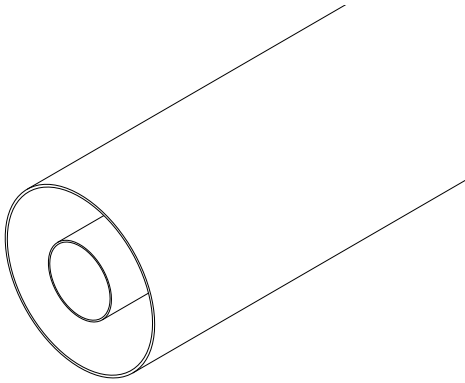


1+5/8" (WX-39D) R. L. Connections

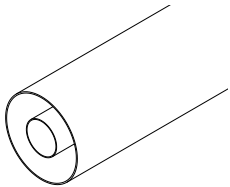
RL-39



FEATURES

- *FastLine* System
- Flush, Recessed and NAX/WX Cutbacks
- Direct Socket-Plug Connections
- EIA and JEITA Standard Compliant

Rigid Lines

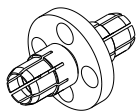


SPECIFICATIONS

Max RMS Power	Default	Painted	
	16.0 kW	20.0 kW	@ 100 MHz
	11.0 kW	14.0 kW	@ 200 MHz
	8.0 kW	10.0 kW	@ 400 MHz
	5.5 kW	7.0 kW	@ 800 MHz
Outer Conductor	High Conductivity Aluminum Alloy		
Inner Conductor	High Conductivity Copper (ETP)		
Environmental Conditions	-5 to +55°C (+23 to +131°F), IP60		
Distance Between Inner Supports	1.4 m (4.6 ft)		
Available lengths	2 or 4 m (6.6 or 13.1 ft)		
Codes	D-RL39O	1+5/8" (WX-39D) Rigid Line Outer	
	D-RL39I	1+5/8" (WX-39D) Rigid Line Inner	

⁽¹⁾ @ 800 MHz

Inner Supports



SPECIFICATIONS

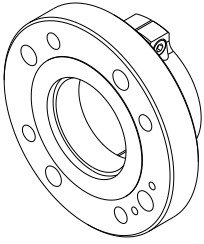
Max RMS Power	20.0 kW	@ 100 MHz
	14.0 kW	@ 200 MHz
	10.0 kW	@ 400 MHz
	7.0 kW	@ 800 MHz
Return Loss ⁽¹⁾	> 40 dB (VSWR < 1.02)	
Environmental Conditions	-5 to +55°C (+23 to +131°F), IP60	
Distance Between Inner Supports	1.4 m (4.6 ft)	
Codes	D-IS39J	1+5/8" (WX-39D) Inner Support

⁽¹⁾ @ 800 MHz

1+5/8" (WX-39D) R. L. Connections

RL-39

EIA Flanges

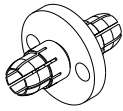


SPECIFICATIONS

Max RMS Power	20.0 kW	@ 100 MHz
	14.0 kW	@ 200 MHz
	10.0 kW	@ 400 MHz
	7.0 kW	@ 800 MHz
Environmental Conditions	-5 to +55°C (+23 to +131°F), IP60	
Codes ⁽²⁾	D-CF39K	1+5/8" EIA FastLine Flange
	D-CF39K1	1+5/8" EIA Flange (11.1 mm c/back)
Options	O-NNB.02	1+5/8" Flange nuts and bolts set

⁽¹⁾ @ 800 MHz ⁽²⁾ Inner Connections not included

EIA Inner Connections

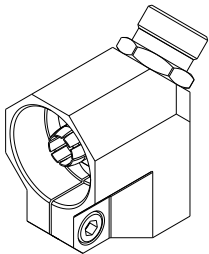


SPECIFICATIONS

Max RMS Power	20.0 kW	@ 100 MHz
	14.0 kW	@ 200 MHz
	10.0 kW	@ 400 MHz
	7.0 kW	@ 800 MHz
Return Loss ⁽¹⁾	> 40 dB (VSWR < 1.02)	
Environmental Conditions	-5 to +55°C (+23 to +131°F), IP60	
Codes	D-IC39K	1+5/8" EIA Inner Connection

⁽¹⁾ @ 800 MHz

Elbows

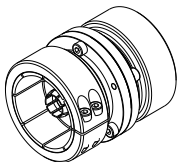


SPECIFICATIONS

Max RMS Power	20.0 kW	@ 100 MHz
	14.0 kW	@ 200 MHz
	10.0 kW	@ 400 MHz
	7.0 kW	@ 800 MHz
Return Loss ⁽¹⁾	> 40 dB (VSWR < 1.02)	
Environmental Conditions	-5 to +55°C (+23 to +131°F), IP60	
Codes	D-EC39L	1+5/8" FastLine Elbow
	D-EC39L1	1+5/8" Elbow (11.1 mm c/back)
	D-EC39L2	WX-39D Elbow (1.5 mm c/back)
Options	O-NFM.01	Fine-match screw (Removed)

⁽¹⁾ @ 800 MHz

Junctions



SPECIFICATIONS

Max RMS Power	20.0 kW	@ 100 MHz
	14.0 kW	@ 200 MHz
	10.0 kW	@ 400 MHz
	7.0 kW	@ 800 MHz
Return Loss ⁽¹⁾	> 40 dB (VSWR < 1.02)	
Max Operating Temperature	70°C (158°F)	
Environmental Conditions	-5 to +55°C (+23 to +131°F), IP60	
Codes	D-JC39L	1+5/8" FastLine Junction
	D-JC39L1	1+5/8" Junction (11.1 mm c/back)
	D-JC39L2	WX-39D Junction (1.5 mm c/back)

⁽¹⁾ @ 800 MHz