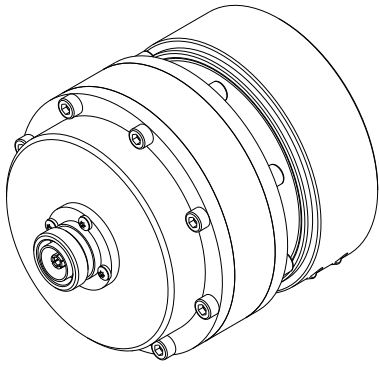


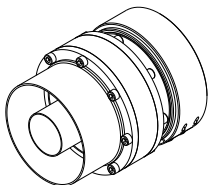
130 mm Straight Adapters



FEATURES

- Interchangeable Connector System
- *FastLine* System
- Flush, Recessed and NAX/WX Cutbacks
- Direct Socket-Plug Connections
- EIA and JEITA Standard Compatible

4+1/2" to
4+1/2"

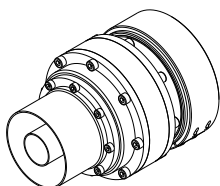


SPECIFICATIONS

Code / Revision	D-SC130 / A
Return Loss ⁽¹⁾	> 40 dB (VSWR < 1.02)
Environmental Conditions	-5 to +55°C (+23 to +131°F), IP60
Connection A ⁽²⁾	4+1/2" Socket / Flange / Plug
Connection B ⁽²⁾	4+1/2" Socket / Flange / Plug
Options ⁽³⁾	Flange nuts and bolts set

⁽¹⁾ @ 800 MHz ⁽²⁾ Inner Connections not included (Flanges only) ⁽³⁾ Flanges only

4+1/2" to
3+1/8" (WX-77D)



SPECIFICATIONS

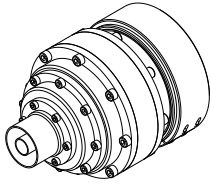
Code / Revision	D-SC130 / A
Return Loss ⁽¹⁾	> 40 dB (VSWR < 1.02)
Environmental Conditions	-5 to +55°C (+23 to +131°F), IP60
Connection A ⁽²⁾	4+1/2" Socket / Flange / Plug
Connection B ⁽²⁾	3+1/8" (WX-77D) / NAX77D Socket / Flange / Plug
Options ⁽³⁾	Flange nuts and bolts set

⁽¹⁾ @ 800 MHz ⁽²⁾ Inner Connections not included (Flanges only) ⁽³⁾ Flanges only

130 mm Straight Adapters

SC130

4+1/2" to
1+5/8" (WX-39D)

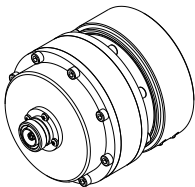


SPECIFICATIONS

Code / Revision	D-SC130 / A
Return Loss ⁽¹⁾	> 40 dB (VSWR < 1.02)
Environmental Conditions	-5 to +55°C (+23 to +131°F), IP60
Connection A ⁽²⁾	4+1/2" Socket / Flange / Plug
Connection B ⁽²⁾	1+5/8" (WX-39D) Socket / Flange / Plug
Options ⁽³⁾	Flange nuts and bolts set

⁽¹⁾ @ 800 MHz ⁽²⁾ Inner Connections not included (Flanges only) ⁽³⁾ Flanges only

4+1/2" to
N, 7-16, 7/8" (WX-20D)



SPECIFICATIONS

Code / Revision	D-SC130 / A
Return Loss ⁽¹⁾	> 40 dB (VSWR < 1.02)
Environmental Conditions	-5 to +55°C (+23 to +131°F), IP60
Connection A ⁽²⁾	4+1/2" Socket / Flange / Plug
Connection B ⁽²⁾	N Female / Male 7-16 Female / Male 7/8" (WX-20D) Socket / Flange / Plug
Options ⁽³⁾	Flange nuts and bolts set

⁽¹⁾ @ 800 MHz ⁽²⁾ Inner Connections not included (Flanges only) ⁽³⁾ Flanges only