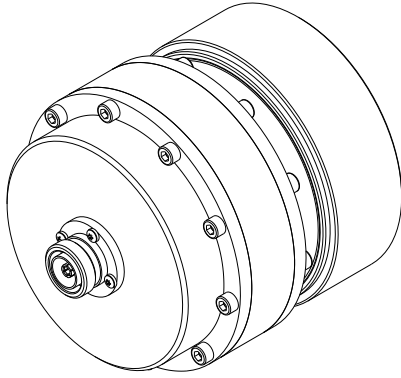


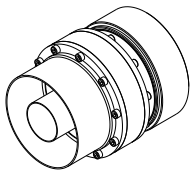
## 150 mm Straight Adapters



## FEATURES

- Interchangeable Connector System
- *FastLine* System
- Flush, Recessed and NAX/WX Cutbacks
- Direct Socket-Plug Connections
- EIA and JEITA Standard Compatible

RL-120 (WX-120D) - 6+1/8" (WX-152D) to  
RL-120 (WX-120D) - 6+1/8" (WX-152D)

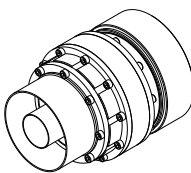


## SPECIFICATIONS

|                             |  |
|-----------------------------|--|
| Code / Revision             | D-SC150 / A  |
| Return Loss <sup>(1)</sup>  | > 40 dB (VSWR < 1.02)  |
| Environmental Conditions    | -5 to +55°C (+23 to +131°F), IP60  |
| Connection A <sup>(2)</sup> | RL-120 (WX-120D)<br>Socket / Flange / Plug<br>6+1/8" (WX-152D)<br>Socket / Flange / Plug |
| Connection B <sup>(2)</sup> | RL-120 (WX-120D)<br>Socket / Flange / Plug<br>6+1/8" (WX-152D)<br>Socket / Flange / Plug |
| Options <sup>(3)</sup>      | Flange nuts and bolts set  |

<sup>(1)</sup> @ 800 MHz <sup>(2)</sup> Inner Connections not included (Flanges only) <sup>(3)</sup> Flanges only

RL-120 (WX-120D) - 6+1/8" (WX-152D) to  
4+1/2"



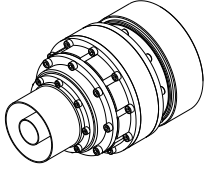
## SPECIFICATIONS

|                             |  |
|-----------------------------|--|
| Code / Revision             | D-SC150 / A  |
| Return Loss <sup>(1)</sup>  | > 40 dB (VSWR < 1.02)  |
| Environmental Conditions    | -5 to +55°C (+23 to +131°F), IP60  |
| Connection A <sup>(2)</sup> | RL-120 (WX-120D)<br>Socket / Flange / Plug<br>6+1/8" (WX-152D)<br>Socket / Flange / Plug |
| Connection B <sup>(2)</sup> | 4+1/2" Socket / Flange / Plug  |
| Options <sup>(3)</sup>      | Flange nuts and bolts set  |

<sup>(1)</sup> @ 800 MHz <sup>(2)</sup> Inner Connections not included (Flanges only) <sup>(3)</sup> Flanges only

## 150 mm Straight Adapters

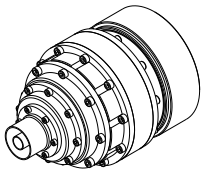
RL-120 (WX-120D) - 6+1/8" (WX-152D) to  
3+1/8" (WX-77D) / NAX77D



## SPECIFICATIONS

|   |  |
|---|--|
| Code / Revision   | D-SC150 / A  |
| Return Loss <sup>(1)</sup>  | > 40 dB (VSWR < 1.02)  |
| Environmental Conditions  | -5 to +55°C (+23 to +131°F), IP60  |
| Connection A <sup>(2)</sup>   | RL-120 (WX-120D)<br>Socket / Flange / Plug<br>6+1/8" (WX-152D)<br>Socket / Flange / Plug |
| Connection B <sup>(2)</sup>   | 3+1/8" (WX-77D) / NAX77D Socket /<br>Flange / Plug                                       |
| Options <sup>(3)</sup>  | Flange nuts and bolts set  |
| <sup>(1)</sup> @ 800 MHz <sup>(2)</sup> Inner Connections not included (Flanges only) <sup>(3)</sup> Flanges only |  |

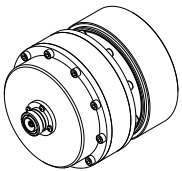
RL-120 (WX-120D) - 6+1/8" (WX-152D) to  
1+5/8" (WX-39D)



## SPECIFICATIONS

|   |  |
|---|--|
| Code / Revision   | D-SC150 / A  |
| Return Loss <sup>(1)</sup>  | > 40 dB (VSWR < 1.02)  |
| Environmental Conditions  | -5 to +55°C (+23 to +131°F), IP60  |
| Connection A <sup>(2)</sup>   | RL-120 (WX-120D)<br>Socket / Flange / Plug<br>6+1/8" (WX-152D)<br>Socket / Flange / Plug |
| Connection B <sup>(2)</sup>   | 1+5/8" (WX-39D) Socket / Flange / Plug   |
| Options <sup>(3)</sup>  | Flange nuts and bolts set  |
| <sup>(1)</sup> @ 800 MHz <sup>(2)</sup> Inner Connections not included (Flanges only) <sup>(3)</sup> Flanges only |  |

RL-120 (WX-120D) - 6+1/8" (WX-152D) to  
N, 7-16, 7/8" (WX-20D)



## SPECIFICATIONS

|   |  |
|---|--|
| Code / Revision   | D-SC150 / A  |
| Return Loss <sup>(1)</sup>  | > 40 dB (VSWR < 1.02)  |
| Environmental Conditions  | -5 to +55°C (+23 to +131°F), IP60  |
| Connection A <sup>(2)</sup>   | RL-120 (WX-120D)<br>Socket / Flange / Plug<br>6+1/8" (WX-152D)<br>Socket / Flange / Plug |
| Connection B <sup>(2)</sup>   | N Female / Male<br>7-16 Female / Male<br>7/8" (WX-20D) Socket / Flange / Plug            |
| Options <sup>(3)</sup>  | Flange nuts and bolts set  |
| <sup>(1)</sup> @ 800 MHz <sup>(2)</sup> Inner Connections not included (Flanges only) <sup>(3)</sup> Flanges only |  |