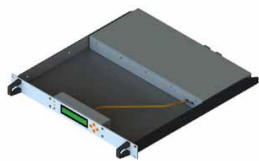
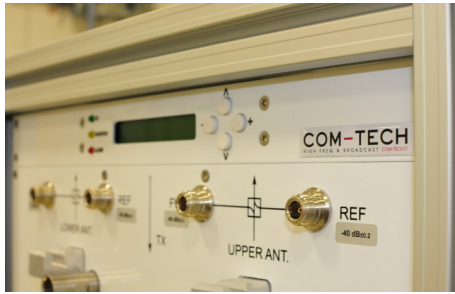
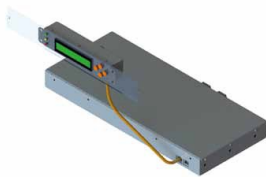


System Monitor

SMR8


1U Rack-Shelf Configuration



Split Display Configuration

FEATURES

- Modular and Upgradeable System
- Up to 18 RF Measurements
- Up to 9 Temperature Measurements
- Up to 8 Relay Output Contacts
- SNMP Integration
- LAN Interface
- 1U Rack-Shelf or Split Display Configurations

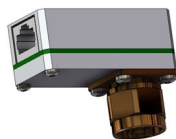
OPTIONS

- SMA / N Female RF Detectors
- Temperature Detectors
- Relay Output Contacts

SPECIFICATIONS

Code / Revision	E-SMR8 / A
Environmental Conditions	-5 to +55°C (+23 to +131°F), IP60
Dimensions / Weight ⁽¹⁾	486x44x480 mm / 2.5 kg (5.5 lb.)
Power supply	110 / 240 V, 50 / 60 Hz
User Interfaces	1x LAN (RJ45) 1x SNMP (RJ45)
Minimum Configuration	2x RF Inputs: 1x Forward Power 1x Reflected Power 1x Temperature Input: 1x Ambient Temperature
Maximum Configuration	18x RF Inputs: 9x Forward Power 9x Reflected Power 9x Temperature Inputs: 8x Equipment Temperature 1x Ambient Temperature
Options	O-YRF.01 N Accuprobe RF Detector O-YRF.02 SMA Accuprobe RF Detector O-YTP.01 Temperature Detector O-YMD.02 8-Output Relè Module O-YRF.10 ATV Peak Sync Interface

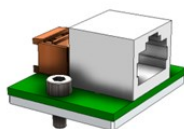
⁽¹⁾ Approximate, default configuration



Accuprobe RF Detectors

Number of Connectable Detectors ⁽¹⁶⁾	Up to 18
Power Range	-50 dBm to +10 dBm
Frequency Range	1 MHz to 4 GHz
Connectors	SMA Female, N Female
Interface	1x RJ45

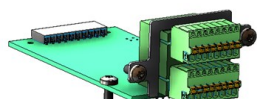
⁽¹⁶⁾ RF Detectors must be added in groups of two



Temperature Detectors

Number of Connectable Detectors ⁽¹⁷⁾	Up to 9
Temperature Range	-20 to +120 °C (-4 to +248 °F)
Fixing	2x M3 Screws
Interface	1x RJ45

⁽¹⁷⁾ One Temperature Detector is included by default for Ambient Temperature



Relay Outputs

Number of Contacts	8 (Open on Alarm)
Alarms	RF / Temperature Thresholds Exceeded
Contact Rating	24 VCC / 1 A