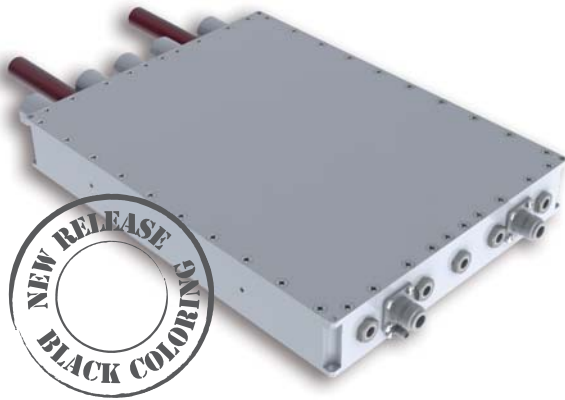


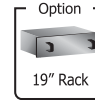
VHF B.III 200 W 3+2-Pole Bandpass Filter

CL3N30B



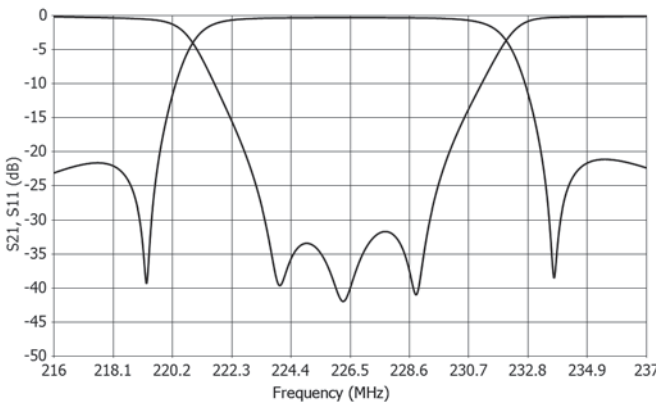
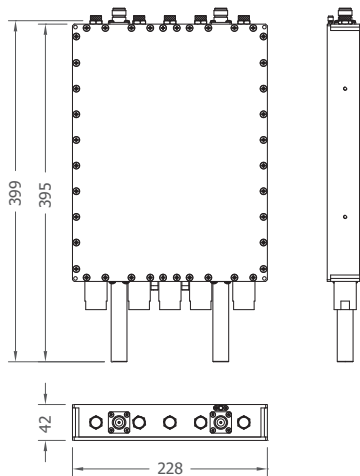
CL
Series

25
mm
Connectors



SPECIFICATIONS

Product Code	A-CL3N30B-xx-yy
Project Number	J-062-01
Frequency Range	174 – 254 MHz
Bandwidth	6 to 8 MHz
Order	3-Pole + 2-Notch
Max Input Power	200 W DTV (300 W ATV)
Temperature Stability	< 6 kHz / K
Max Operating Temp.	70 °C (158 °F)
Environmental Conditions	-5 to +55 °C (+23 to +131 °F), IP60
Body Finish	Metallic black coloring
Dimensions	228 x 42 x 399 mm
Weight	3.5 kg (7.7 lb)
Output Monitor Probe	SMA Female
Connectors Interface	2 x 25mm Series
Connectors	D-PC25C N Female (Default) D-PC25E 7-16 Female
Options	O-MR.01 SMB Output Monitor Probe O-RK.02 1U 19" Rack, w/ handles



TUNING DATA

	CCIR B Standard	FCC M Standard
Insertion Loss	< 0.46 dB @ V.C.	< 0.56 dB @ V.C.
Selectivity	> 30 dB @ V.C. -5.5/+11 MHz > 24 dB @ V.C. -11/+16.5 MHz	> 30 dB @ V.C. -4.5/+9 MHz > 24 dB @ V.C. -9/+13.5 MHz
Harmonic Attenuation	> 50 dB up to 550 MHz	> 50 dB up to 550 MHz
Return Loss	> 26 dB (VSWR < 1.11)	> 26 dB (VSWR < 1.11)
Group Delay Variation	< 25 ns	< 25 ns
Over-Temperature	< 10 K @ 300 W ATV	< 12 K @ 300 W ATV