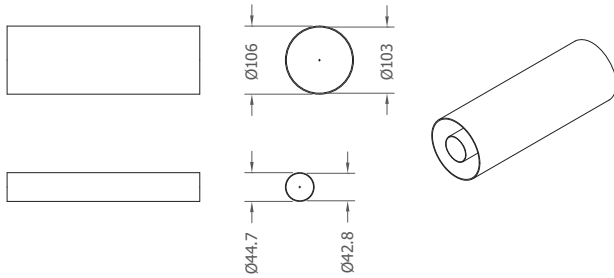


FastLine SYSTEM

EIA 4+1/2"

RL1030 / RL1031

EIA 4+1/2" RIGID LINE Outer/Inner Conductor

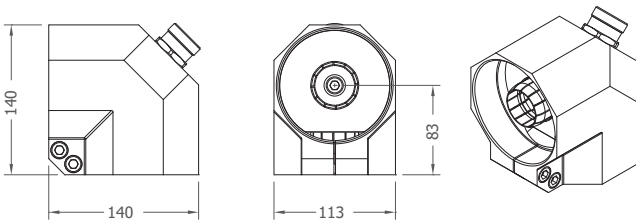


SPECIFICATIONS

Available lengths	2 or 4 m (6.6 or 13.1 ft)
Outer Conductor	Aluminum (Al)
Inner Conductor	High Conductivity Copper (Cu)

EC103R

EIA 4+1/2" ELBOW CONNECTION

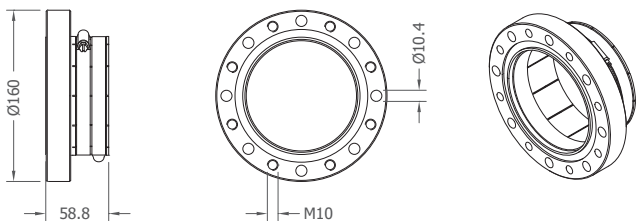


SPECIFICATIONS

Frequency Range	0 – 1 GHz
Return Loss	>40 dB (VSWR < 1.02)
Options	O-SM.01 Fine Match Screw

CF103Q

EIA 4+1/2" CLAMP FLANGE

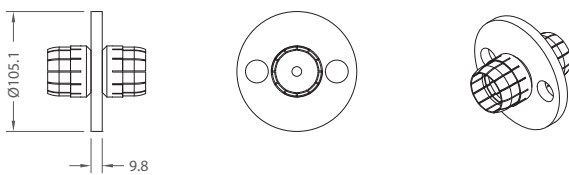


SPECIFICATIONS

Frequency Range	0 – 1 GHz
Return Loss	>40 dB (VSWR < 1.02)

IC103Q

EIA 4+1/2" INNER CONNECTION

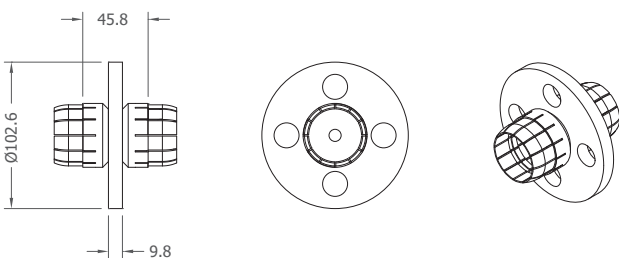


SPECIFICATIONS

Frequency Range	0 – 1 GHz
Return Loss	>40 dB (VSWR < 1.02)

IS103P

EIA 4+1/2" INNER SUPPORT



SPECIFICATIONS

Frequency Range	0 – 1 GHz
Return Loss	>40 dB (VSWR < 1.02)
Length between supports	3 m (9.8 ft)