

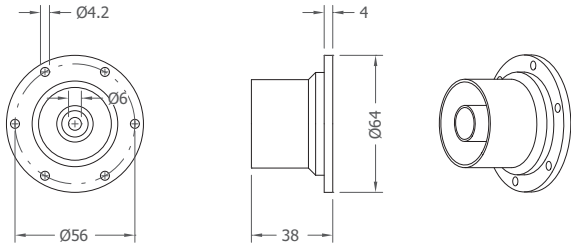
PANEL CONNECTORS

64 mm Series

PC64x

PC64J

EIA 1+5/8" *FastLine* SOCKET



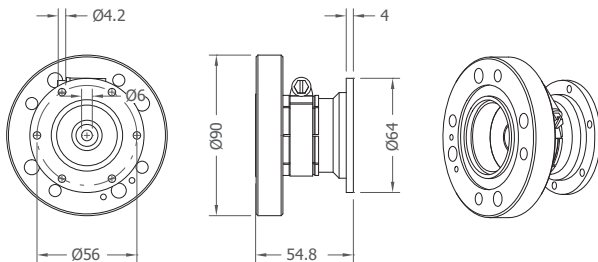
64
mm
Connectors

SPECIFICATIONS

Frequency Range	0 – 1 GHz
Return Loss	>40 dB (VSWR < 1.02)

PC64K

EIA 1+5/8" *FastLine* FLANGE



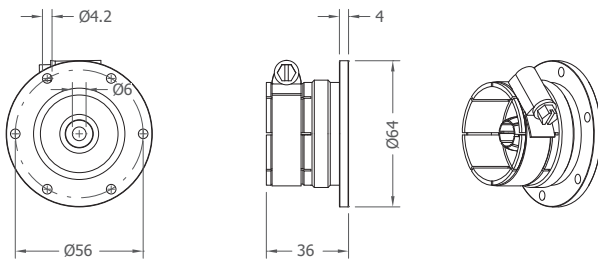
64
mm
Connectors

SPECIFICATIONS

Frequency Range	0 – 1 GHz
Return Loss	>40 dB (VSWR < 1.02)

PC64L

EIA 1+5/8" *FastLine* PLUG



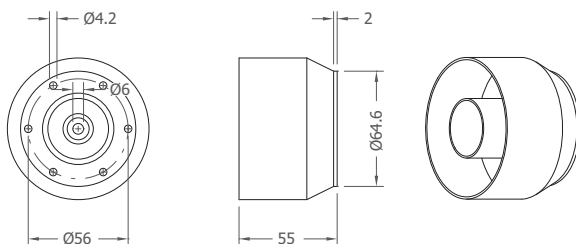
64
mm
Connectors

SPECIFICATIONS

Frequency Range	0 – 1 GHz
Return Loss	>40 dB (VSWR < 1.02)

PC64M

EIA 3+1/8" *FastLine* SOCKET



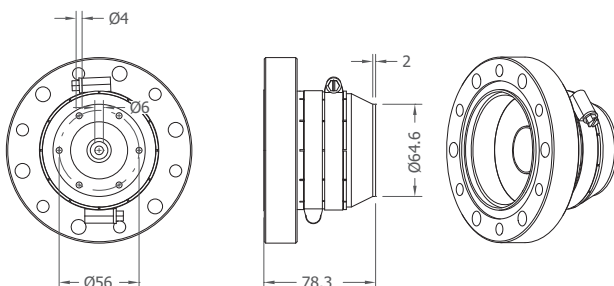
64
mm
Connectors

SPECIFICATIONS

Frequency Range	0 – 1 GHz
Return Loss	>40 dB (VSWR < 1.02)

PC64N

EIA 3+1/8" *FastLine* FLANGE



64
mm
Connectors

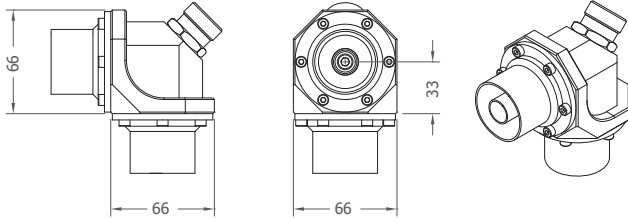
SPECIFICATIONS

Frequency Range	0 – 1 GHz
Return Loss	>40 dB (VSWR < 1.02)

LOAD, CONNECTORS AND MISC
Panel Connectors

AC64

ANGULAR CONNECTION



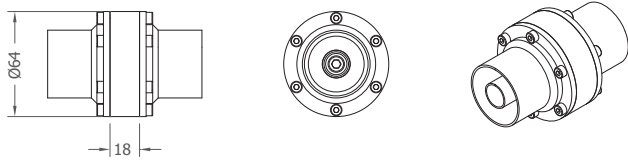
64
mm
Connectors

SPECIFICATIONS

Product Code	D-AC64-xx-yy
Frequency Range	0 – 1 GHz
Return Loss	>40 dB (VSWR < 1.02)
Connectors	D-PC64J EIA 1+5/8" FastLine Socket D-PC64K EIA 1+5/8" FastLine Flange D-PC64L EIA 1+5/8" FastLine Plug

SC64

STRAIGHT CONNECTION



64
mm
Connectors

SPECIFICATIONS

Product Code	D-SC64-xx-yy
Frequency Range	0 – 1 GHz
Return Loss	>40 dB (VSWR < 1.02)
Connectors	D-PC64C N Female D-PC64D N Male D-PC64E 7-16 Female D-PC64F 7-16 Male D-PC64G EIA 7/8" FastLine Socket D-PC64H EIA 7/8" FastLine Flange D-PC64I EIA 7/8" FastLine Plug D-PC64J EIA 1+5/8" FastLine Socket D-PC64K EIA 1+5/8" FastLine Flange D-PC64L EIA 1+5/8" FastLine Plug