

## UHF 4-Input Progressive Multicoupler

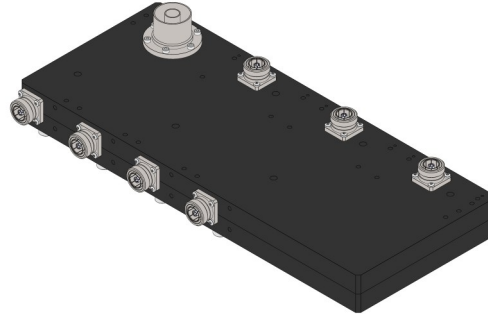
MH4P60RC

## FEATURES

- Progressive Power-Combination
- Rack-Unit Connector Spacing
- Modular Connector System
- Matched Splitters: PS-Series (Optional)
- 10-Year Warranty

## OPTIONS

- Liquid Cooled Integrated Loads
- Output on the Left
- Loads on the Left



## SPECIFICATIONS

Code / Revision	C-MH4P60RC / A
Matched Splitter	C-PS4RC
Frequency Range	470-800 MHz
Max RMS Input / Output Power <sup>(3,5)</sup>	2.0 kW / 8.0 kW (700 MHz)
No. of Inputs	4
Connector Spacing	2U
Return Loss (VSWR)	> 26 dB (1.11)
Isolation	> 30 dB
Amplitude Response	-6.10 ±0.7 dB
Max Operating Temperature	65 °C (149 °F)
Environmental Conditions	-5 to +55 °C (+23 to +131 °F), IP60
Dimensions / Weight <sup>(1)</sup>	518x212x66 mm / 10.5 kg
Connectors (Inputs) <sup>(8)</sup>	4x 32 mm D-PC32C N Female D-PC32D N Male D-PC32E 7-16 Female (Default) D-PC32F 7-16 Male D-PC32G 7/8" FastLine Socket D-PC32H 7/8" FastLine Flange D-PC32I 7/8" FastLine Plug D-PC32I0 7/8" FastLine Quick Plug D-PC32J 1+5/8" FastLine Socket D-PC32K 1+5/8" FastLine Flange D-PC32L 1+5/8" FastLine Plug
Connectors (Loads) <sup>(8)</sup>	3x 32 mm D-PC32C N Female D-PC32E 7-16 Female (Default) D-PC32G 7/8" FastLine Socket D-PC32H 7/8" FastLine Flange D-PC32J 1+5/8" FastLine Socket D-PC32K 1+5/8" FastLine Flange
Connectors (Output) <sup>(8)</sup>	1x 64 mm D-PC64J 1+5/8" FastLine Socket (Default) D-PC64K 1+5/8" FastLine Flange D-PC64M 3+1/8" FastLine Socket D-PC64N 3+1/8" FastLine Flange
Options	O-TML.02 Integrated Liquid Cooled Loads O-TMZ.01 Output on the Left O-TMZ.02 Loads on the Left
Liquid Cooling Interface <sup>(5)</sup>	3/8" NPT Male
Coolant / Liquid Flow	Glycol and Water 10 l/min (2.6 gal/min)

<sup>(1)</sup> Approximate, default configuration <sup>(3)</sup> Altitude < 1500 m (4,900 ft.), Free air, Ambient temp. <30 °C (86 °F) <sup>(5)</sup> Glycol 30%, Liquid temp. 45° C (113 ° F), Liquid flow 6 l/min (1.6 gal/min)

<sup>(8)</sup> Other Connections available