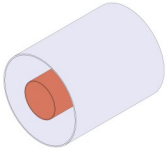


RL-120, WX-120D Rigid Line Components

Rigid Line



FEATURES

- Available in Aluminum-Copper and Copper-Copper (On Request)
- 2 or 4 m (6.6 or 13.1 ft) lengths
- Rigid Line cutter available on request

SPECIFICATIONS

Max RMS Power ⁽³⁾	UHF	Default	Painted ⁽²⁰⁾
	VHF B.III	38.0 kW	48.0 kW (700 MHz)
	VHF B.I	66.0 kW	83.0 kW (230 MHz)
	VHF B.I	107.0 kW	34.0 kW (88 MHz)
	FM	97 kW	121.0 kW (108 MHz)
Outer Conductor	High Conductivity Aluminum Alloy High Conductivity Copper (On Request)		
Inner Conductor	High Conductivity Copper (ETP)		
Environmental Conditions	-5 to +55°C (+23 to +131°F), IP60		
Distance Between Inner Supports	3 m (9.8 ft)		
Available lengths	2 or 4 m (6.6 or 13.1 ft)		
Code	D-RL-120O	RL-120, WX-120D Rigid Line Outer (Al)	
	D-RL-12002	NAX-120D Rigid Line Outer	
	D-RL-120I	RL-120, WX-120D Rigid Line Inner	

⁽³⁾ Altitude < 1500 m (4,900 ft.), Free air, Ambient temp. < 30 °C (86 °F)

⁽²⁰⁾ Provided unpainted; to be painted by Customer after installation

Inner Support



FEATURES

- Required to sustain the inner conductor in long Rigid Line sections

SPECIFICATIONS

Max RMS Power ⁽³⁾	UHF	48.0 kW	(700 MHz)
	VHF B.III	83.0 kW	(230 MHz)
	VHF B.I	134.0 kW	(88 MHz)
	VHF B.I	134.0 kW	(88 MHz)
	FM	121.0 kW	(108 MHz)
Return Loss (VSWR)	> 40 dB (1.02)		
Environmental Conditions	-5 to +55°C (+23 to +131°F), IP60		
Distance Between Inner Supports	3 m (9.8 ft)		
Code	D-IS120S	RL-120, WX-120D Inner Support	

⁽³⁾ Altitude < 1500 m (4,900 ft.), Free air, Ambient temp. < 30 °C (86 °F)

Inner Connection



FEATURES

- Required to connect two Flange connections
- Includes screw-set for the relative Flange connections

SPECIFICATIONS

Max RMS Power ⁽³⁾	UHF	48.0 kW	(700 MHz)
	VHF B.III	83.0 kW	(230 MHz)
	VHF B.I	134.0 kW	(88 MHz)
	VHF B.I	134.0 kW	(88 MHz)
	FM	121.0 kW	(108 MHz)
Return Loss (VSWR)	> 40 dB (1.02)		
Environmental Conditions	-5 to +55°C (+23 to +131°F), IP60		
Code	D-IC120X	RL-120 Inner Connection	

⁽³⁾ Altitude < 1500 m (4,900 ft.), Free air, Ambient temp. < 30 °C (86 °F)

Clamp Flange



FEATURES

- Easy clamp-on to Rigid Lines outers and Socket connections
- Added threads for faster and simpler nut-free connection with other flanges

SPECIFICATIONS

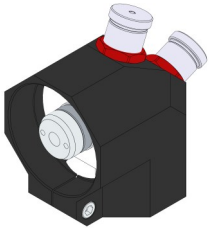
Max RMS Power ⁽³⁾	UHF	48.0 kW	(700 MHz)
	VHF B.III	83.0 kW	(230 MHz)
	VHF B.I	134.0 kW	(88 MHz)
	VHF B.I	134.0 kW	(88 MHz)
	FM	121.0 kW	(108 MHz)
Environmental Conditions	-5 to +55°C (+23 to +131°F), IP60		
Code	D-CF120X	RL-120 FastLine Flange ⁽¹⁴⁾	
Options	O-NNB.06	Flange screw set	

⁽³⁾ Altitude < 1500 m (4,900 ft.), Free air, Ambient temp. < 30 °C (86 °F)

⁽¹⁴⁾ Inner Connections not included

RL-120, WX-120D, NAX-120D Rigid Line Components

Plug Elbow



FEATURES

- 90° Elbow with Plugs on both sides
- Fine Match screw

SPECIFICATIONS

Max RMS Power ⁽³⁾	UHF	48.0 kW	(700 MHz)
	VHF B.III	83.0 kW	(230 MHz)
	VHF B.I	134.0 kW	(88 MHz)
	FM	121.0 kW	(108 MHz)
Return Loss (VSWR)	> 40 dB (1.02)		
Environmental Conditions	-5 to +55°C (+23 to +131°F), IP60		
Code	D-EC120T	RL-120 FastLine Plug Elbow	

⁽³⁾ Altitude < 1500 m (4.900 ft.), Free air, Ambient temp. < 30 °C (86 °F)

Plug Junction

SPECIFICATIONS

Max RMS Power ⁽³⁾	UHF	48.0 kW	(700 MHz)
	VHF B.III	83.0 kW	(230 MHz)
	VHF B.I	134.0 kW	(88 MHz)
	FM	121.0 kW	(108 MHz)
Return Loss (VSWR)	> 40 dB (1.02)		
Environmental Conditions	-5 to +55°C (+23 to +131°F), IP60		
Code	D-JC120T	RL-120 FastLine Plug Junction	

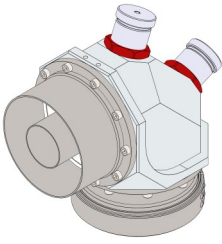
⁽³⁾ Altitude < 1500 m (4.900 ft.), Free air, Ambient temp. < 30 °C (86 °F)

FEATURES

- Straight Junction with Plugs on both sides

RL-120, WX-120D Rigid Line Components

Modular Elbow



FEATURES

- 90° Elbow, allowing a wide choice of connections on both sides
- Zero and Recessed Cutback versions available
- Modular Connector System

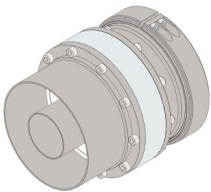
SPECIFICATIONS

Max RMS Power ⁽³⁾	UHF	48.0 kW	(700 MHz)
	VHF B.III	83.0 kW	(230 MHz)
	VHF B.I	134.0 kW	(88 MHz)
	FM	121.0 kW	(108 MHz)
Return Loss (VSWR)	> 40 dB (1.02)		
Environmental Conditions	-5 to +55°C (+23 to +131°F), IP60		
Code	D-AC150	150 mm Modular Elbow	
Connections ⁽⁸⁾	D-PC130P	4+1/2" FastLine Socket	
	D-PC130P6	4+1/16" FastLine Socket	
	D-PC130Q	4+1/2" FastLine Flange ⁽¹⁴⁾	
	D-PC130Q6	4+1/16" FastLine Flange ⁽¹⁴⁾	
	D-PC130R	4+1/2" FastLine Plug	
	D-PC150S	RL-120 FastLine Socket	
	D-PC150X	RL-120 FastLine Flange ⁽¹⁴⁾	
Options	O-NNB.02	1+5/8" Flange screw set	
	O-NNB.01	7/8" Flange screw set	
	O-NFM.01	Fine-match screw removal	

⁽³⁾ Altitude < 1500 m (4,900 ft.), Free air, Ambient temp. < 30 °C (86 °F)

⁽⁸⁾ Other Connections available ⁽¹⁴⁾ Inner Connections not included

Modular Junction



FEATURES

- Straight Junction, allowing a wide choice of connections on both sides.
- Zero and Recessed Cutback versions available
- Modular Connector System

SPECIFICATIONS

Max RMS Power ⁽³⁾	UHF	48.0 kW	(700 MHz)
	VHF B.III	83.0 kW	(230 MHz)
	VHF B.I	134.0 kW	(88 MHz)
	FM	121.0 kW	(108 MHz)
Return Loss (VSWR)	> 40 dB (1.02)		
Environmental Conditions	-5 to +55°C (+23 to +131°F), IP60		
Code	D-SC150	150 mm Modular Junction	
Connections ⁽⁸⁾	D-PC130P	4+1/2" FastLine Socket	
	D-PC130P6	4+1/16" FastLine Socket	
	D-PC130Q	4+1/2" FastLine Flange ⁽¹⁴⁾	
	D-PC130Q6	4+1/16" FastLine Flange ⁽¹⁴⁾	
	D-PC130R	4+1/2" FastLine Plug	
	D-PC150S	RL-120 FastLine Socket	
	D-PC150X	RL-120 FastLine Flange ⁽¹⁴⁾	
Options	O-NNB.02	1+5/8" Flange screw set	
	O-NNB.01	7/8" Flange screw set	

⁽³⁾ Altitude < 1500 m (4,900 ft.), Free air, Ambient temp. < 30 °C (86 °F)

⁽⁸⁾ Other Connections available ⁽¹⁴⁾ Inner Connections not included