

6+1/8", WX-152D Rigid Line Components

Rigid Line



FEATURES

- Available in Aluminum-Copper and Copper-Copper (On Request)
- 2 or 4 m (6.6 or 13.1 ft) lengths
- Rigid Line cutter available on request

SPECIFICATIONS

Max RMS Power ⁽³⁾	UHF	Default	Painted ⁽²⁰⁾
	VHF B.III	59.0 kW	74.0 kW (700 MHz)
	VHF B.I	104.0 kW	130.0 kW (230 MHz)
	VHF B.I	168.0 kW	210.0 kW (88 MHz)
	FM	151 kW	189.0 kW (108 MHz)
Outer Conductor	High Conductivity Aluminum Alloy		
Inner Conductor	High Conductivity Copper (ETP)		
Environmental Conditions	-5 to +55°C (+23 to +131°F), IP60		
Available lengths	2 or 4 m (6.6 or 13.1 ft)		
Code	D-RL152O	6+1/8" Rigid Line Outer (Al)	
	D-RL152CO	6+1/8" Rigid Line Outer (Cu)	
	D-RL152I	6+1/8" Rigid Line Inner	

⁽³⁾ Altitude < 1500 m (4,900 ft.), Free air, Ambient temp. < 30 °C (86 °F)

⁽²⁰⁾ Provided unpainted; to be painted by Customer after installation

Inner Connection



FEATURES

- Required to connect two Flange connections
- Includes screw-set for the relative Flange connections

SPECIFICATIONS

Max RMS Power ⁽³⁾	UHF	74.0 kW	(700 MHz)
	VHF B.III	130.0 kW	(230 MHz)
	VHF B.I	210.0 kW	(88 MHz)
	VHF B.I	210.0 kW	(88 MHz)
	FM	189.0 kW	(108 MHz)
Return Loss (VSWR)	> 40 dB (1.02)		
Environmental Conditions	-5 to +55°C (+23 to +131°F), IP60		
Code	D-IC152V	6+1/8" Inner Connection	

⁽³⁾ Altitude < 1500 m (4,900 ft.), Free air, Ambient temp. < 30 °C (86 °F)

Clamp Flange



FEATURES

- Easy clamp-on to Rigid Lines outers and Socket connections
- Added threads for faster and simpler nut-free connection with other flanges

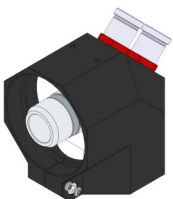
SPECIFICATIONS

Max RMS Power ⁽³⁾	UHF	74.0 kW	(700 MHz)
	VHF B.III	130.0 kW	(230 MHz)
	VHF B.I	210.0 kW	(88 MHz)
	VHF B.I	210.0 kW	(88 MHz)
	FM	189.0 kW	(108 MHz)
Environmental Conditions	-5 to +55°C (+23 to +131°F), IP60		
Code	D-CF152V	6+1/8" FastLine Flange ⁽¹⁴⁾	
Options	O-NNB.05	6+1/8" Flange screw set	

⁽³⁾ Altitude < 1500 m (4,900 ft.), Free air, Ambient temp. < 30 °C (86 °F)

⁽¹⁴⁾ Inner Connections not included

Plug Elbow



FEATURES

- 90° Elbow with Plugs on both sides
- Fine Match screw

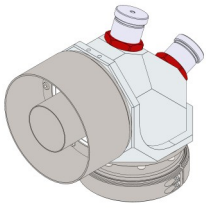
SPECIFICATIONS

Max RMS Power ⁽³⁾	UHF	74.0 kW	(700 MHz)
	VHF B.III	130.0 kW	(230 MHz)
	VHF B.I	210.0 kW	(88 MHz)
	VHF B.I	210.0 kW	(88 MHz)
	FM	189.0 kW	(108 MHz)
Return Loss (VSWR)	> 40 dB (1.02)		
Environmental Conditions	-5 to +55°C (+23 to +131°F), IP60		
Code	D-EC152W	6+1/8" FastLine Plug Elbow	

⁽³⁾ Altitude < 1500 m (4,900 ft.), Free air, Ambient temp. < 30 °C (86 °F)

6+1/8", WX-152D Rigid Line Components

Modular Elbow



FEATURES

- 90° Elbow, allowing a wide choice of connections on both sides
- Zero and Recessed Cutback versions available
- Modular Connector System

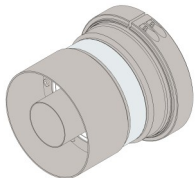
SPECIFICATIONS

Max RMS Power ⁽³⁾	UHF	48.0 kW	(700 MHz)
	VHF B.III	83.0 kW	(230 MHz)
	VHF B.I	134.0 kW	(88 MHz)
	FM	121.0 kW	(108 MHz)
Return Loss (VSWR)	> 40 dB (1.02)		
Environmental Conditions	-5 to +55°C (+23 to +131°F), IP60		
Code	D-AC150	150 mm Modular Elbow	
Connections ⁽⁸⁾	D-PC150S	RL-120 FastLine Socket	
	D-PC150X	RL-120 FastLine Flange ⁽¹⁴⁾	
	D-PC150T	RL-120 Fast Line Plug	
	D-PC150U	6+1/8" FastLine Socket	
	D-PC150V	6+1/8" FastLine Flange ⁽¹⁴⁾	
	D-PC150W	6+1/8" FastLine Plug	
Options	O-NNB.02	1+5/8" Flange screw set	
	O-NNB.01	7/8" Flange screw set	
	O-NFM.01	Fine-match screw removal	

⁽³⁾ Altitude < 1500 m (4,900 ft.), Free air, Ambient temp. < 30 °C (86 °F)

⁽⁸⁾ Other Connections available ⁽¹⁴⁾ Inner Connections not included

Modular Junction



FEATURES

- Straight Junction, allowing a wide choice of connections on both sides.
- Zero and Recessed Cutback versions available
- Modular Connector System

SPECIFICATIONS

Max RMS Power ⁽³⁾	UHF	48.0 kW	(700 MHz)
	VHF B.III	83.0 kW	(230 MHz)
	VHF B.I	134.0 kW	(88 MHz)
	FM	121.0 kW	(108 MHz)
Return Loss (VSWR)	> 40 dB (1.02)		
Environmental Conditions	-5 to +55°C (+23 to +131°F), IP60		
Code	D-SC150	150 mm Modular Junction	
Connections ⁽⁸⁾	D-PC150S	RL-120 FastLine Socket	
	D-PC150X	RL-120 FastLine Flange ⁽¹⁴⁾	
	D-PC150T	RL-120 Fast Line Plug	
	D-PC150U	6+1/8" FastLine Socket	
	D-PC150V	6+1/8" FastLine Flange ⁽¹⁴⁾	
	D-PC150W	6+1/8" FastLine Plug	
Options	O-NNB.02	1+5/8" Flange screw set	
	O-NNB.01	7/8" Flange screw set	

⁽³⁾ Altitude < 1500 m (4,900 ft.), Free air, Ambient temp. < 30 °C (86 °F)

⁽⁸⁾ Other Connections available ⁽¹⁴⁾ Inner Connections not included